



FOLIO: 63/236794

SEARCH DATE	TIME	EDITION NO	DATE
-----	----	-----	----
17/2/2025	1:06 PM	-	-

VOL 10883 FOL 63 IS THE CURRENT CERTIFICATE OF TITLE

LAND

LOT 63 IN DEPOSITED PLAN 236794

AT IFIELD

LOCAL GOVERNMENT AREA GOULBURN MULWAREE

PARISH OF GOULBURN COUNTY OF ARGYLE

TITLE DIAGRAM DP236794

FIRST SCHEDULE

NEW SOUTH WALES LAND AND HOUSING CORPORATION

SECOND SCHEDULE (0 NOTIFICATIONS)

NIL

NOTATIONS

UNREGISTERED DEALINGS: NIL

*** END OF SEARCH ***

The Minister administering the Housing Act 2001 became the legal owner of the land on 9 June 2025 even though the NSW Land Registry Services title register has not yet been updated (Schedule 2A, section 2(a) of the Housing Act 2001).



FOLIO: 64/236794

SEARCH DATE	TIME	EDITION NO	DATE
-----	----	-----	----
15/12/2022	2:37 PM	-	-

VOL 10883 FOL 64 IS THE CURRENT CERTIFICATE OF TITLE

LAND

LOT 64 IN DEPOSITED PLAN 236794

AT IFIELD

LOCAL GOVERNMENT AREA GOULBURN MULWAREE

PARISH OF GOULBURN COUNTY OF ARGYLE

TITLE DIAGRAM DP236794

FIRST SCHEDULE

NEW SOUTH WALES LAND AND HOUSING CORPORATION

SECOND SCHEDULE (0 NOTIFICATIONS)

NIL

NOTATIONS

UNREGISTERED DEALINGS: NIL

*** END OF SEARCH ***

The Minister administering the Housing Act 2001 became the legal owner of the land on 9 June 2025 even though the NSW Land Registry Services title register has not yet been updated (Schedule 2A, section 2(a) of the Housing Act 2001).



FOLIO: 65/236794

SEARCH DATE	TIME	EDITION NO	DATE
-----	----	-----	----
15/12/2022	2:37 PM	-	-

VOL 10883 FOL 65 IS THE CURRENT CERTIFICATE OF TITLE

LAND

LOT 65 IN DEPOSITED PLAN 236794

AT IFIELD

LOCAL GOVERNMENT AREA GOULBURN MULWAREE

PARISH OF GOULBURN COUNTY OF ARGYLE

TITLE DIAGRAM DP236794

FIRST SCHEDULE

NEW SOUTH WALES LAND AND HOUSING CORPORATION

SECOND SCHEDULE (0 NOTIFICATIONS)

NIL

NOTATIONS

UNREGISTERED DEALINGS: NIL

*** END OF SEARCH ***

The Minister administering the Housing Act 2001 became the legal owner of the land on 9 June 2025 even though the NSW Land Registry Services title register has not yet been updated (Schedule 2A, section 2(a) of the Housing Act 2001).

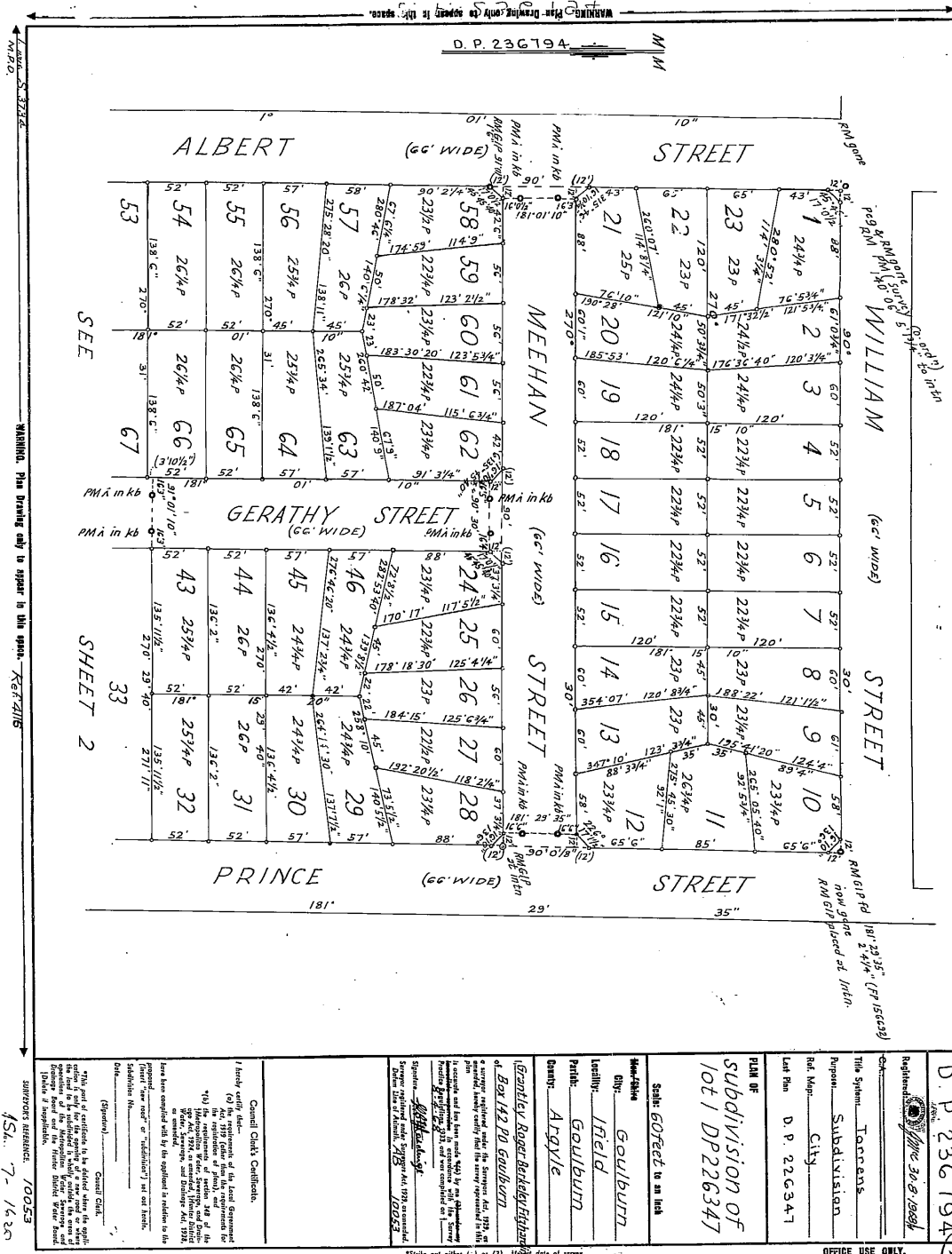
Plan Form 2.—This form must NOT be used where it is intended to dedicate public roads or public reserves or create charging easements, easements, or restrictions as to use.—See Form 3.

D.P. 236794

WARNING: CREATING OR FOLDING WILL LEAD TO REJECTION

CONVERSION TABLE ADDED IN REGISTRAR GENERAL'S DEPARTMENT

CONVERSION TABLE ADDED IN REGISTRAR GENERAL'S DEPARTMENT



INVESTIGATIONS OR AMENDMENTS NOTED ON PLAN
IN REGISTERED GENERAL'S OFFICE.

I, Bruce Richard Davies, Registrar General for New South Wales, certify that this map is a photograph made on a permanent record of a document in my custody this 18th day of July, 1977.

SWAGERS REFERENCE: 10053

15th 7-1620

FEET INCHES	METRES
1 1/2	0.381
2 1/2	0.635
3 1/2	0.890
4 1/2	1.144
5 1/2	1.398
6 1/2	1.652
7 1/2	1.906
8 1/2	2.160
9 1/2	2.414
10 1/2	2.668
11 1/2	2.922
12 1/2	3.176
13 1/2	3.430
14 1/2	3.684
15 1/2	3.938
16 1/2	4.192
17 1/2	4.446
18 1/2	4.700
19 1/2	4.954
20 1/2	5.208
21 1/2	5.462
22 1/2	5.716
23 1/2	5.970
24 1/2	6.224
25 1/2	6.478
26 1/2	6.732
27 1/2	6.986
28 1/2	7.240
29 1/2	7.494
30 1/2	7.748
31 1/2	8.002
32 1/2	8.256
33 1/2	8.510
34 1/2	8.764
35 1/2	9.018
36 1/2	9.272
37 1/2	9.526
38 1/2	9.780
39 1/2	10.034
40 1/2	10.288
41 1/2	10.542
42 1/2	10.796
43 1/2	11.050
44 1/2	11.304
45 1/2	11.558
46 1/2	11.812
47 1/2	12.066
48 1/2	12.320
49 1/2	12.574
50 1/2	12.828
51 1/2	13.082
52 1/2	13.336
53 1/2	13.590
54 1/2	13.844
55 1/2	14.098
56 1/2	14.352
57 1/2	14.606
58 1/2	14.860
59 1/2	15.114
60 1/2	15.368
61 1/2	15.622
62 1/2	15.876
63 1/2	16.130
64 1/2	16.384
65 1/2	16.638
66 1/2	16.892
67 1/2	17.146


WARNING: CREASING OR FOLDING WILL LEAD TO REJECTION

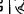


AMENDMENTS OR ADDITIONS NOTED ON PLAN
IN REGISTRAR GENERAL'S OFFICE.

I, Bruce Richard Davies, Registrar General for New South Wales, certify that this negative is a photograph made as a permanent record of a document in my custody this 18th day of July, 1977

10053


CONVERSION TABLE ADDED IN
REGULAR GENERAL'S DEPARTMENT


CHIEF GENERAL'S DEPARTMENT
REGULAR GENERAL'S DEPARTMENT

DP 246791	SH	2/2	FEET INCHES	METRES	DP 246791	SH	2/2	CON'D	FEET INCHES	METRES
101	9 1/4	31.020	3	0.076	107	3	32.523	3	76.203	76.203
100	6 1/4	30.539	2	0.102	106	11	31.144	4	36.144	36.144
99	3 1/4	29.558	1	0.152	105	120	2 3/4	36.646	36.646	
98	1 1/3	29.315	1	0.162	104	112	2 3/4	36.646	36.646	
97	1 1/2	29.072	1	0.229	103	122	1	37.230	37.230	
96	1 1/2	28.829	1	0.247	102	122	1	37.230	37.230	
95	1 1/2	28.586	1	0.265	101	122	1	37.230	37.230	
94	1 1/2	28.343	1	0.283	100	122	1	37.230	37.230	
93	1 1/2	28.100	1	0.301	99	122	1	37.230	37.230	
92	1 1/2	27.857	1	0.319	98	122	1	37.230	37.230	
91	1 1/2	27.614	1	0.337	97	122	1	37.230	37.230	
90	1 1/2	27.371	1	0.355	96	122	1	37.230	37.230	
89	1 1/2	27.128	1	0.373	95	122	1	37.230	37.230	
88	1 1/2	26.885	1	0.391	94	122	1	37.230	37.230	
87	1 1/2	26.642	1	0.409	93	122	1	37.230	37.230	
86	1 1/2	26.399	1	0.427	92	122	1	37.230	37.230	
85	1 1/2	26.156	1	0.445	91	122	1	37.230	37.230	
84	1 1/2	25.913	1	0.463	90	122	1	37.230	37.230	
83	1 1/2	25.670	1	0.481	89	122	1	37.230	37.230	
82	1 1/2	25.427	1	0.499	88	122	1	37.230	37.230	
81	1 1/2	25.184	1	0.517	87	122	1	37.230	37.230	
80	1 1/2	24.941	1	0.535	86	122	1	37.230	37.230	
79	1 1/2	24.698	1	0.553	85	122	1	37.230	37.230	
78	1 1/2	24.455	1	0.571	84	122	1	37.230	37.230	
77	1 1/2	24.212	1	0.589	83	122	1	37.230	37.230	
76	1 1/2	23.969	1	0.607	82	122	1	37.230	37.230	
75	1 1/2	23.726	1	0.625	81	122	1	37.230	37.230	
74	1 1/2	23.483	1	0.643	80	122	1	37.230	37.230	
73	1 1/4	23.240	1	0.661	79	122	1	37.230	37.230	
72	1 1/2	23.000	1	0.679	78	122	1	37.230	37.230	
71	1 1/2	22.757	1	0.697	77	122	1	37.230	37.230	
70	1 1/2	22.514	1	0.715	76	122	1	37.230	37.230	
69	1 1/2	22.271	1	0.733	75	122	1	37.230	37.230	
68	1 1/2	22.028	1	0.751	74	122	1	37.230	37.230	
67	1 1/2	21.785	1	0.769	73	122	1	37.230	37.230	
66	1 1/2	21.542	1	0.787	72	122	1	37.230	37.230	
65	1 1/2	21.299	1	0.805	71	122	1	37.230	37.230	
64	1 1/2	21.056	1	0.823	70	122	1	37.230	37.230	
63	1 1/2	20.813	1	0.841	69	122	1	37.230	37.230	
62	1 1/2	20.570	1	0.859	68	122	1	37.230	37.230	
61	1 1/2	20.327	1	0.877	67	122	1	37.230	37.230	
60	1 1/2	20.084	1	0.895	66	122	1	37.230	37.230	
59	1 1/2	19.841	1	0.913	65	122	1	37.230	37.230	
58	1 1/2	19.598	1	0.931	64	122	1	37.230	37.230	
57	1 1/2	19.355	1	0.949	63	122	1	37.230	37.230	
56	1 1/2	19.112	1	0.967	62	122	1	37.230	37.230	
55	1 1/2	18.869	1	0.985	61	122	1	37.230	37.230	
54	1 1/2	18.626	1	1.003	60	122	1	37.230	37.230	
53	1 1/2	18.383	1	1.021	59	122	1	37.230	37.230	
52	1 1/2	18.140	1	1.039	58	122	1	37.230	37.230	
51	1 1/2	17.897	1	1.057	57	122	1	37.230	37.230	
50	1 1/2	17.654	1	1.075	56	122	1	37.230	37.230	
49	1 1/2	17.411	1	1.093	55	122	1	37.230	37.230	
48	1 1/2	17.168	1	1.111	54	122	1	37.230	37.230	
47	1 1/2	16.925	1	1.129	53	122	1	37.230	37.230	
46	1 1/2	16.682	1	1.147	52	122	1	37.230	37.230	
45	1 1/2	16.439	1	1.165	51	122	1	37.230	37.230	
44	1 1/2	16.196	1	1.183	50	122	1	37.230	37.230	
43	1 1/2	15.953	1	1.201	49	122	1	37.230	37.230	
42	1 1/4	15.710	1	1.219	48	122	1	37.230	37.230	
41	1 1/2	15.467	1	1.237	47	122	1	37.230	37.230	
40	1 1/2	15.224	1	1.255	46	122	1	37.230	37.230	
39	1 1/2	14.981	1	1.273	45	122	1	37.230	37.230	
38	1 1/2	14.738	1	1.291	44	122	1	37.230	37.230	
37	1 1/2	14.495	1	1.309	43	122	1	37.230	37.230	
36	0 1/4	14.252	1	1.327	42	122	1	37.230	37.230	
35	0 1/4	14.009	1	1.345	41	122	1	37.230	37.230	
34	0 1/4	13.766	1	1.363	40	122	1	37.230	37.230	
33	5 1/2	13.523	1	1.381	39	122	1	37.230	37.230	
32	5 1/2	13.280	1	1.399	38	122	1	37.230	37.230	
31	5 1/2	13.037	1	1.417	37	122	1	37.230	37.230	
30	5 1/2	12.794	1	1.435	36	122	1	37.230	37.230	
29	5 1/2	12.551	1	1.453	35	122	1	37.230	37.230	
28	5 1/2	12.308	1	1.471	34	122	1	37.230	37.230	
27	5 1/2	12.065	1	1.489	33	122	1	37.230	37.230	
26	5 1/2	11.822	1	1.507	32	122	1	37.230	37.230	
25	5 1/2	11.579	1	1.525	31	122	1	37.230	37.230	
24	5 1/2	11.336	1	1.543	30	122	1	37.230	37.230	
23	5 1/2	11.093	1	1.561	29	122	1	37.230	37.230	
22	5 1/2	10.850	1	1.579	28	122	1	37.230	37.230	
21	5 1/2	10.607	1	1.597	27	122	1	37.230	37.230	
20	5 1/2	10.364	1	1.615	26	122	1	37.230	37.230	
19	5 1/2	10.121	1	1.633	25	122	1	37.230	37.230	
18	5 1/2	9.878	1	1.651	24	122	1	37.230	37.230	
17	5 1/2	9.635	1	1.669	23	122	1	37.230	37.230	
16	5 1/2	9.392	1	1.687	22	122	1	37.230	37.230	
15	5 1/2	9.149	1	1.705	21	122	1	37.230	37.230	
14	5 1/2	8.906	1	1.723	20	122	1	37.230	37.230	
13	5 1/2	8.663	1	1.741	19	122	1	37.230	37.230	
12	5 1/2	8.420	1	1.759	18	122	1	37.230	37.230	
11	5 1/2	8.177	1	1.777	17	122	1	37.230	37.230	
10	5 1/2	7.934	1	1.795	16	122	1	37.230	37.230	
9	5 1/2	7.691	1	1.813	15	122	1	37.230	37.230	
8	5 1/2	7.448	1	1.831	14	122	1	37.230	37.230	
7	5 1/2	7.205	1	1.849	13	122	1	37.230	37.230	
6	5 1/2	6.962	1	1.867	12	122	1	37.230	37.230	
5	5 1/2	6.719	1	1.885	11	122	1	37.230	37.230	
4	5 1/2	6.476	1	1.903	10	122	1	37.230	37.230	
3	5 1/2	6.233	1	1.921	9	122	1	37.230	37.230	
2	5 1/2	5.990	1	1.939	8	122	1	37.230	37.230	
1	5 1/2	5.747	1	1.957	7	122	1	37.230	37.230	
AC RD P					6	122	1	37.230	37.230	
SG M					5	122	1	37.230	37.230	
					4	122	1	37.230	37.230	
					3	122	1	37.230	37.230	
					2	122	1	37.230	37.230	
					1	122	1	37.230	37.230	
					0	122	1	37.230	37.230	
					120	2 3/4	36.646	36.646		
					119	2 3/4	36.646	36.646		
					118	2 3/4	36.646	36.646		
					117	2 3/4	36.646	36.646		
					116	2 3/4	36.646	36.646		
					115	2 3/4	36.646	36.646		
					114	2 3/4	36.646	36.646		
					113	2 3/4	36.646	36.646		
					112	2 3/4	36.646	36.646		
					111	2 3/4	36.646	36.646		
					110	2 3/4	36.646	36.646		
					109	2 3/4	36.646	36.646		
					108	2 3/4	36.646	36.646		
					107	2 3/4	36.646	36.646		
					106	2 3/4	36.646	36.646		
					105	2 3/4	36.646	36.646		
					104	2 3/4	36.646	36.646		
					103	2 3/4	36.646	36.646		
					102	2 3/4	36.646	36.646		
					101	2 3/4	36.646	36.646		
					100	2 3/4	36.646	36.646		
					99	2 3/4	36.646	36.646		
					98	2 3/4	36.646	36.646		
					97	2 3/4	36.646	36.646		
					96	2 3/4	36.646	36.646		